

# DRESDEN

Installation drawings



marking			length	pcs	
	WALL LOG 70x146				
	HAMMER BLOCK 70 MM			3	
R-01	70x145 RAFTER		4808	6	
R-02	70x145 RAFTER		4808	3	
P-1	90x90 CORNER POST		2348	1	
P-2	90x90 CORNER POST		2224	1	
AR-1	45x120 FLOOR FRAME		4570	1	
AR-1B	45x120 FLOOR FRAME	<i>cutout for drainage</i>	4570	1	
AR-2	45x120 FLOOR FRAME		4122	9	
AR-3	45x120 FLOOR FRAME		3705	2	
AR-4	45x120 FLOOR FRAME		3190	8	
AR-6	45x120 FLOOR FRAME		2212	12	
AR-7	45x120 FLOOR FRAME		1800	2	
AR-8	45x120 FLOOR FRAME		471	7	
AR-5	45x95 FLOOR FRAME		2212	2	
PL-1	28x120 FLOOR BOARD (FRONT ROOM)		3655	30+4	
PL-2	28x120 FLOOR BOARD (SAUNA ROOM)		1965	20+3	
PL-3	28x120 FLOOR BOARD (WASH ROOM)		1555	20+3	
TR-1	28x120 DECKING BOARD		4600	7+1	
TR-2	28x120 DECKING BOARD		800	47+3	

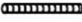
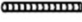





VS-1	GRID WALL 600x2110			2	
------	--------------------	--	--	---	--

LI-1	UNDER THE DOOR 10x70		1580	2	

KL-1	29x120 ROOF BOARDS		4645	43+3	
KL-2	29x120 ROOF BOARDS		1955	43+3	
SL-2	14x121 CEILING BOARD FOR SAUNA ROOM		2196	18+3	
SR-3	45x45 CEILING BOARD SUPPORT		2000	2	
SL-2	18x45 CEILING BOARD DISTANCE		1995	5	
RL-2	45x45 ROOF EDGE BOARD SUPPORT DETAIL		330	10	
RL-1	28x95 ROOF EDGE BOARD		~4800	24	
PP-1	18x45 FLOOR AND CEILING MOULDINGS		~4800	12	
	TRIANGLE PROFILE FOR ROOF EDGES (UNDER SBS)		~4 m	2	

	WINDOW 70x1100x1729 + MOULDINGS			3	
	DOOR 70x1580x2000 + MOULDINGS			2	
	GLASS DOOR 70x690x1980 BRONZE + MOULDINGS			2	
		MOULDING 18x95	1955	8	
		MOULDING 18x95	910	4	
extra	18x95 EXTRA MOULDING		~2,4	2	
TE-1	28x30 + 28x70 "T" FIXING FILLET		2000	4	
TE-2	28x30 + 28x70 "T" FIXING FILLET		1980	4	
TE-3	28x30 + 28x70 "T" FIXING FILLET		1729	6	

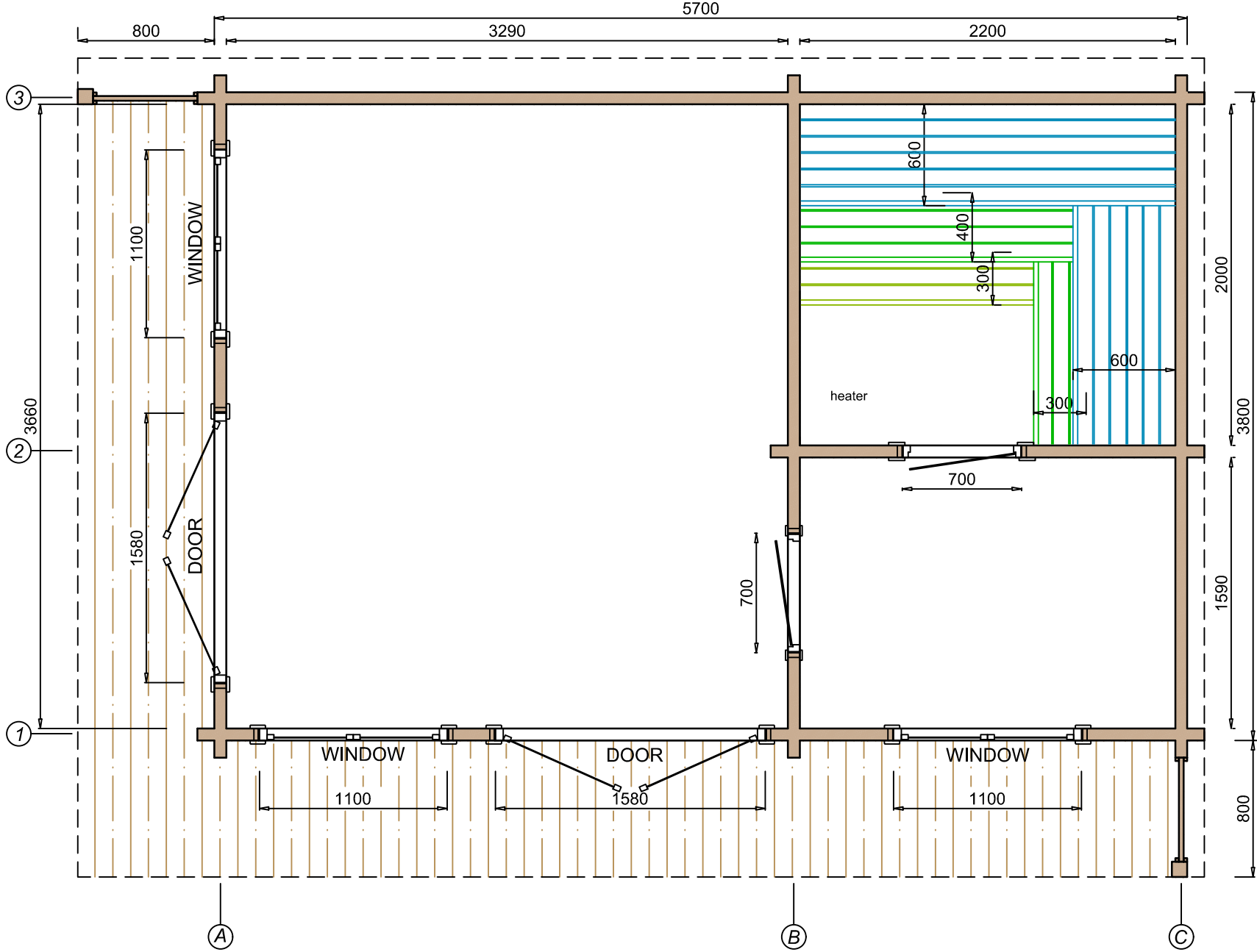
	BENCH MODULE 600x2192			1	
	BENCH MODULE 400x2192			1	
	BENCH MODULE 300x2192			1	
	BENCH MODULE 600x1397			1	
	BENCH MODULE 300x1068			1	
	BENCH SKIRT 2192			1	
	BENCH SKIRT 1447			1	
	BACK REST 2100			1	
	BACK REST 1880			1	
	LAVA TOED 45x45 KOMPLEKT			1	
	VERTICAL BENCH SUPPORT 45x45		1000	1	
	SPU CEILING INSULATION 30x600x1200	sauna room ceiling		7	
RN-1	WATER DRAINAGE GUTTER	LEFT		1	
RN-2	WATER DRAINAGE GUTTER	RIGHT		1	
	SLOPE DETAIL UNDER FLOOR BOARD 3 MM		2195	2	
	SLOPE DETAIL UNDER FLOOR BOARD 6 MM		2195	2	
	SLOPE DETAIL UNDER FLOOR BOARD 9 MM		2195	2	
	SLOPE DETAIL UNDER FLOOR BOARD 12 MM		2195	1	
	ALUMINIUM PROFILE FOR DOOR/FLOOR MOULDING			2	
	SBS BITUMEN ROOF UNDERLAYER (15m2)			3	
	SBS BITUMEN ROOF TOP LAYER (10m2)			4	

	TREADED ROD M10		2670	3	
	TREADED ROD M10		2540	3	
	DRIVE NUT FOR TREADED ROD			6	
	PLAIN WASHER FOR TREADED ROD			6	
	NUT FOR TREADED ROD			6	
	SLIDING BRACKET 35x35x130 FOR GRID WALL			6	
	WASHER M5 FOR GRID WALL			6	
	L-BRACKET 90x90 FOR FLOOR FRAME / ROOF EDGE			20	
	BEAM BRACKET 45x97 FOR FLOOR FRAME			10	
	POST HEIGHT ADJUSTMENT			2	
	SCREW 3,5x40 FOR MOULDINGS			400	
	SCREW 4,5x70 FOR ROOF EDGE BOARDS			300	
	SCREW 5x90 FOR FLOOR FRAME			200	
	SCREW 4,2x55 FOR FLOOR BOARDS			600	
	SCREW 4,2x55 FOR DECKING BOARDS			500	
	SCREW 4,5x80 FOR BENCH SUPPORTS, POST,			200	
	SCREW 6x180 FOR RAFTERS AND WALL CONNECTIONS			200	
	SCREW 5x40 FOR METAL BRACKETS			200	
	NAIL 40 MM FOR CEILING BOARDS			~200	
	NAIL 75 MM FOR ROOF BOARDS			~1200	
	VENTILATION LOUVER D100 WOOD			3	
	VENTILATION GRID D100 METAL			3	
	FOIL TAPE			1	

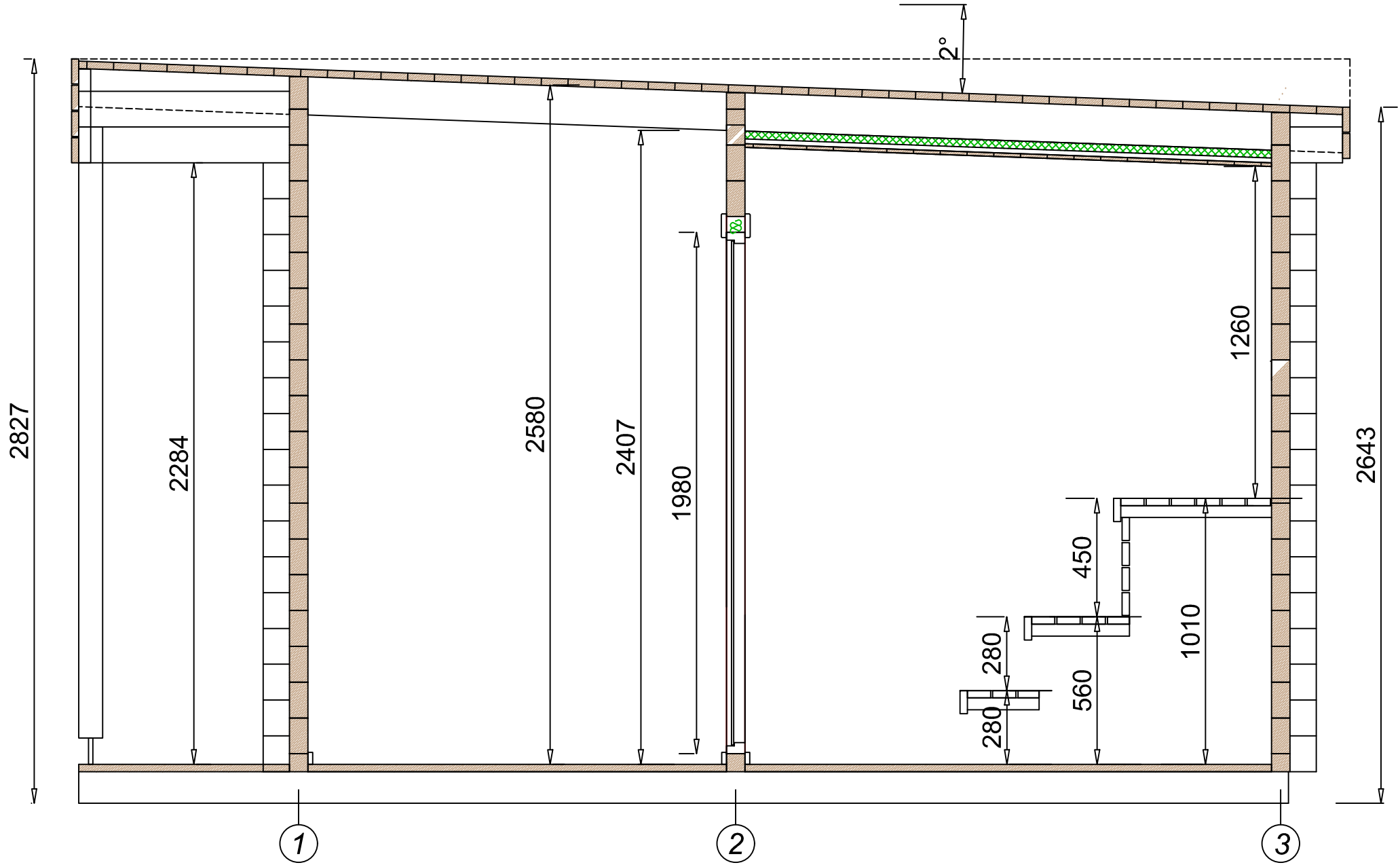


DRESDEN\_eri\_92111/82110  
3D VAADE 9/20/2021

# TOP VIEW

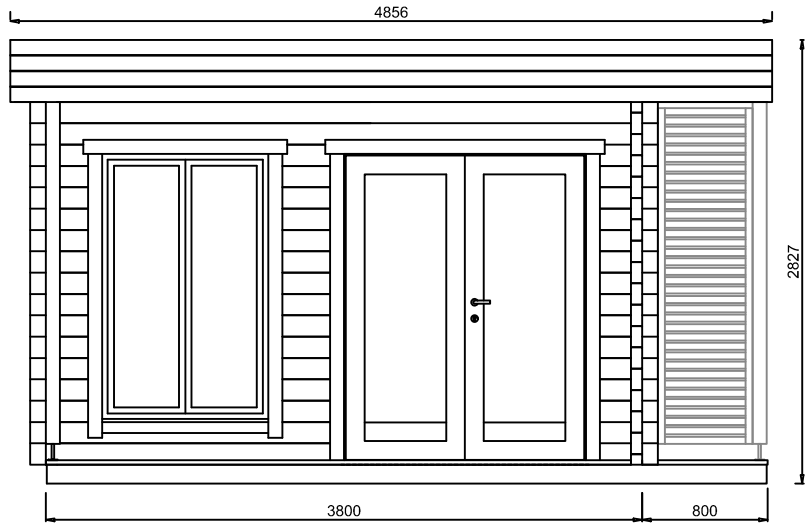


# CROSS-SECTION

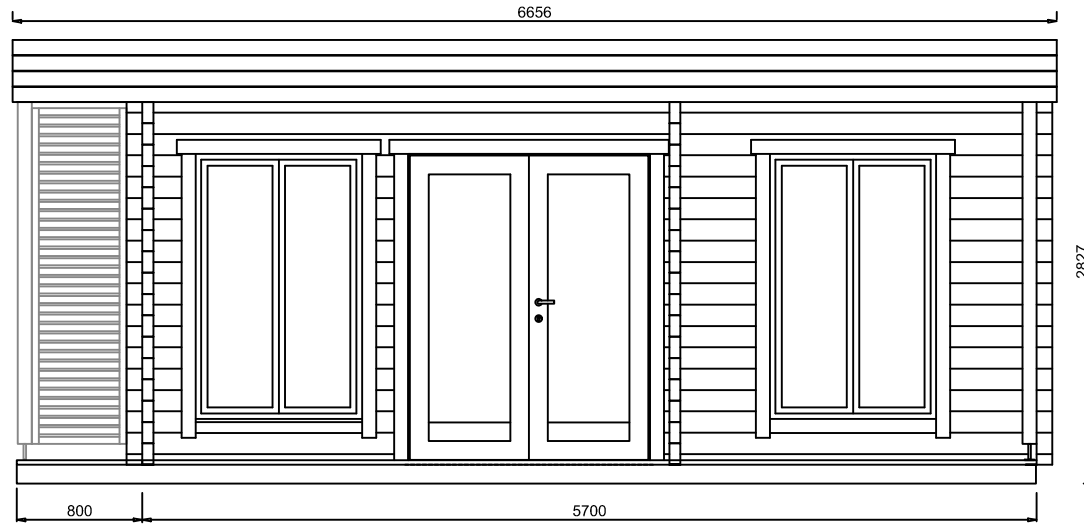




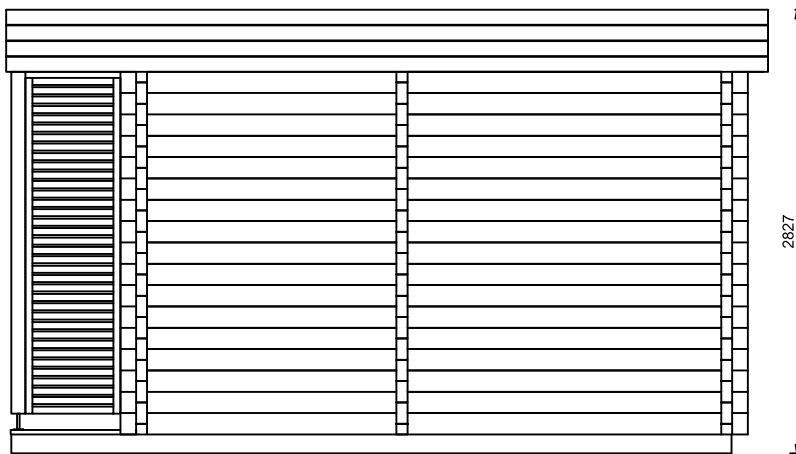
LEFT VIEW



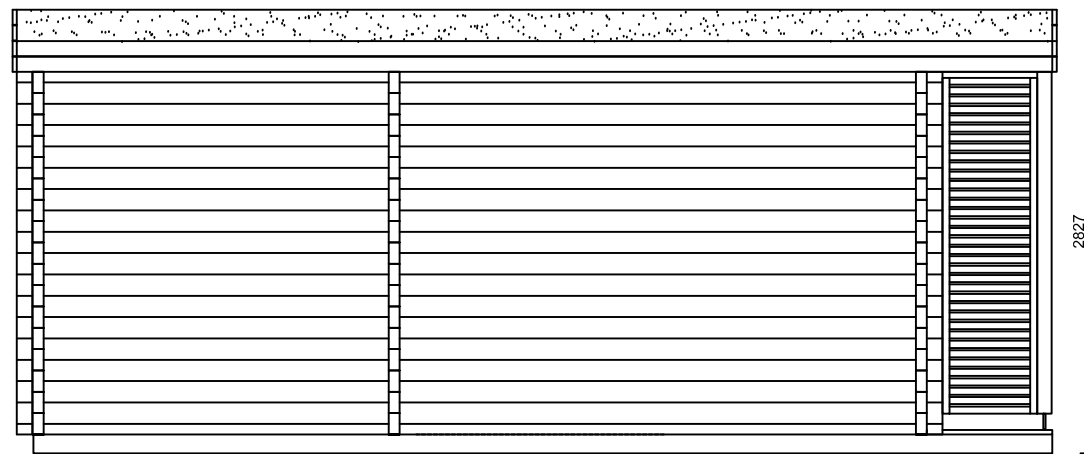
FRONT VIEW



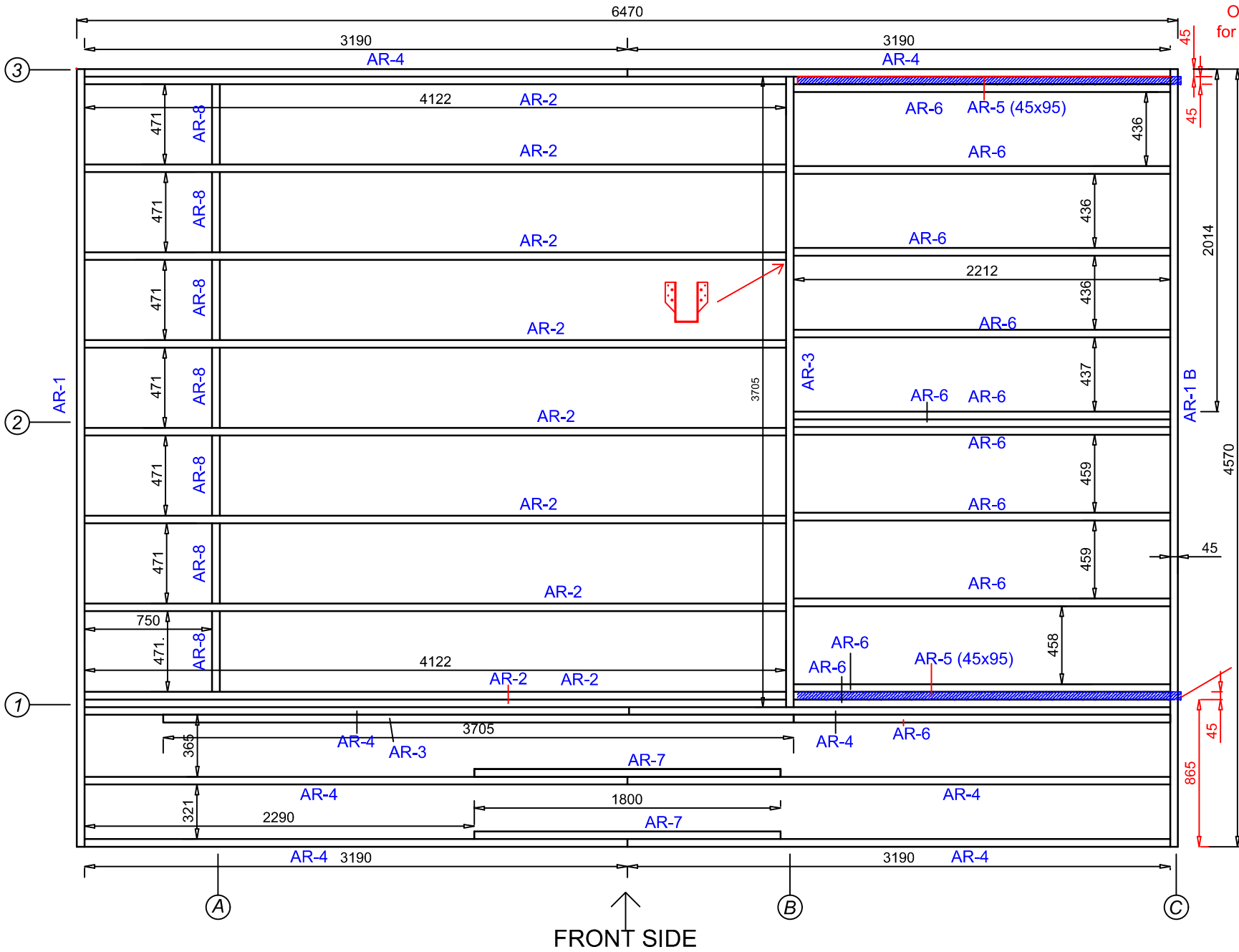
RIGHT VIEW



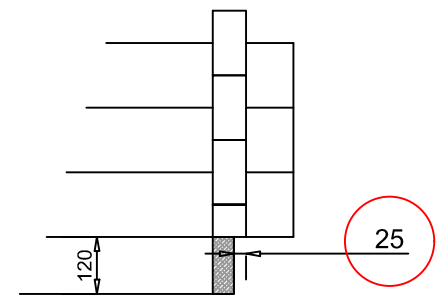
BACK VIEW



# FLOOR FRAME 45x120



Opening 45x25 for water drainage



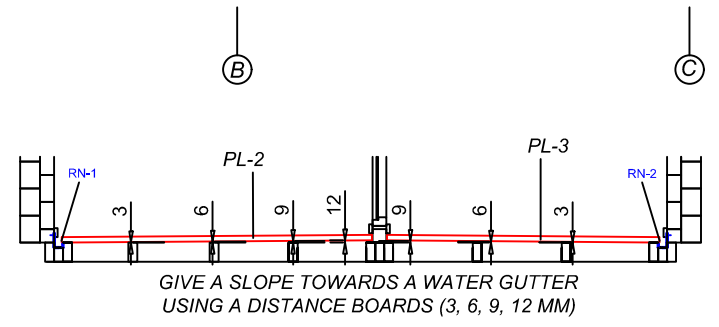
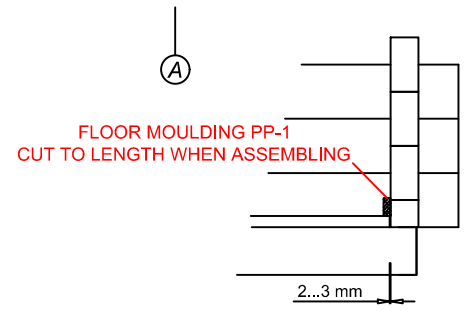
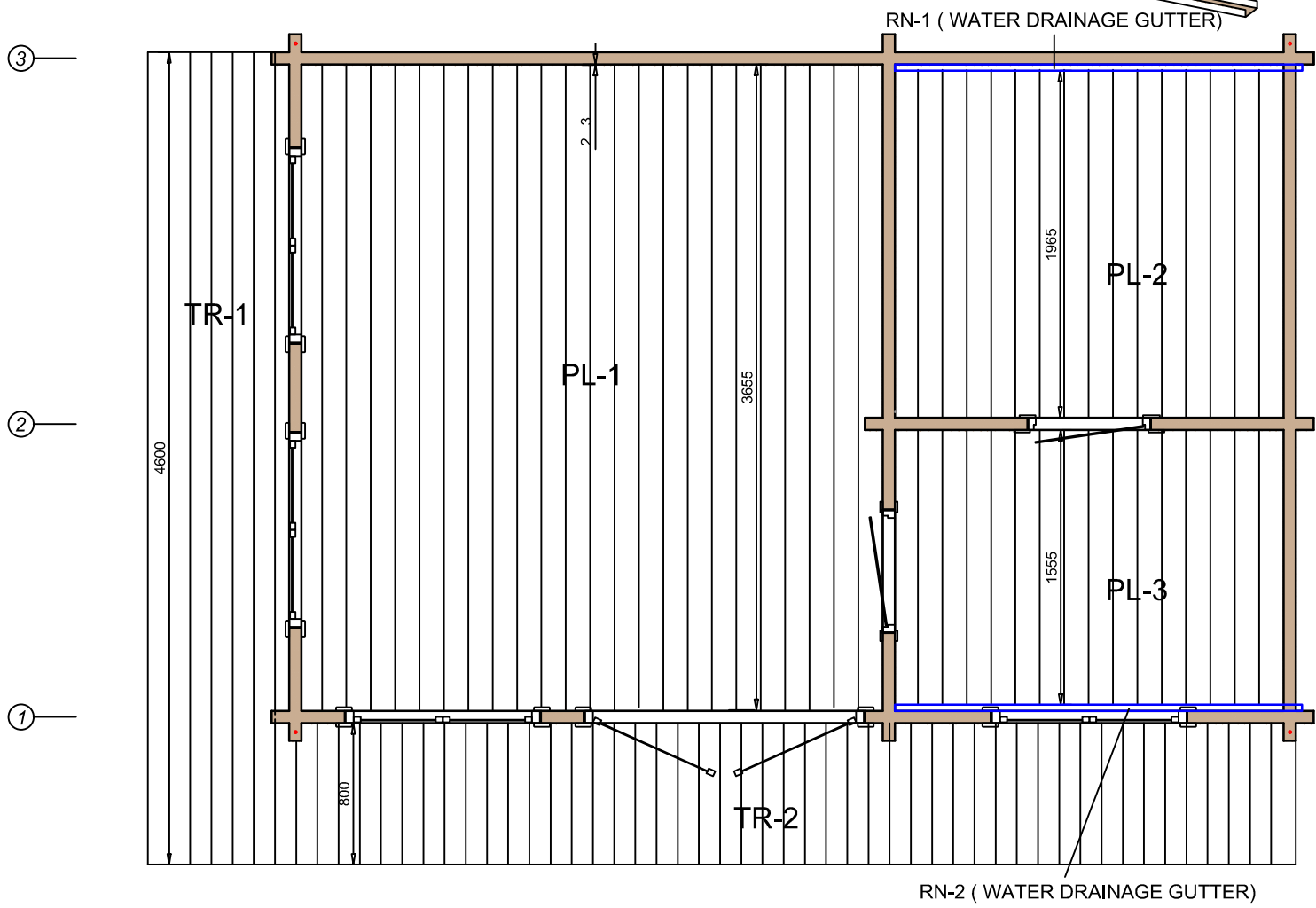
Opening 45x25 for water drainage

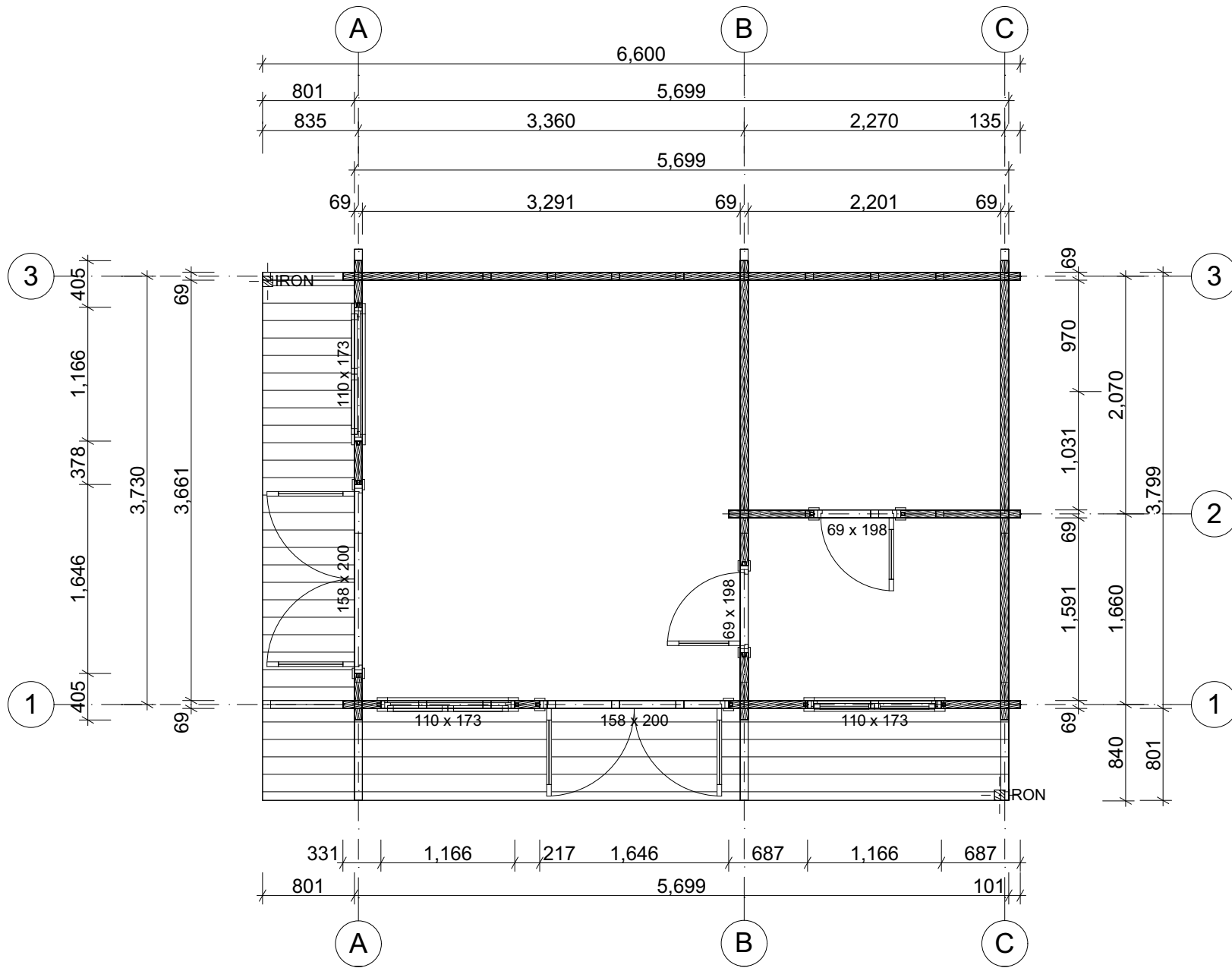
Fix the details together with 90 mm screws

Use beam brackets (10pcs) to fix the details in places where can not use screws

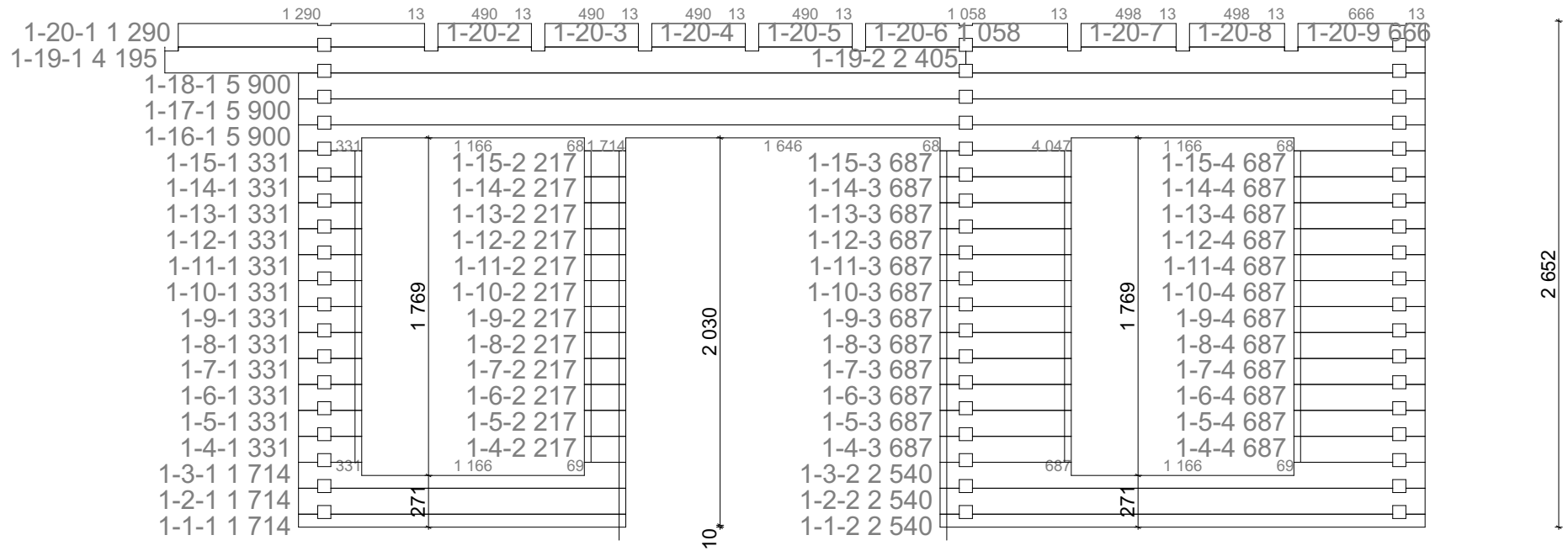
FRONT SIDE

# FLOOR AND DECKING BOARD









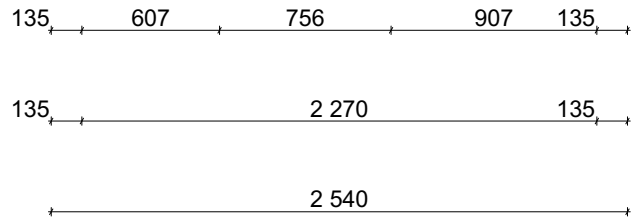
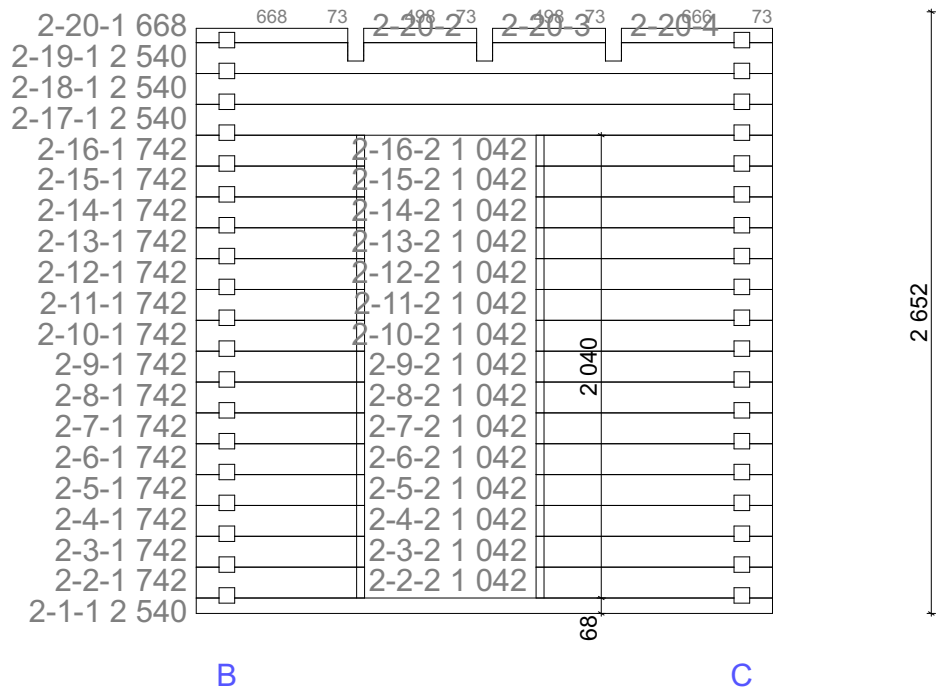
A

LI-1 (10x70x1580)  
UNDER THE DOOR

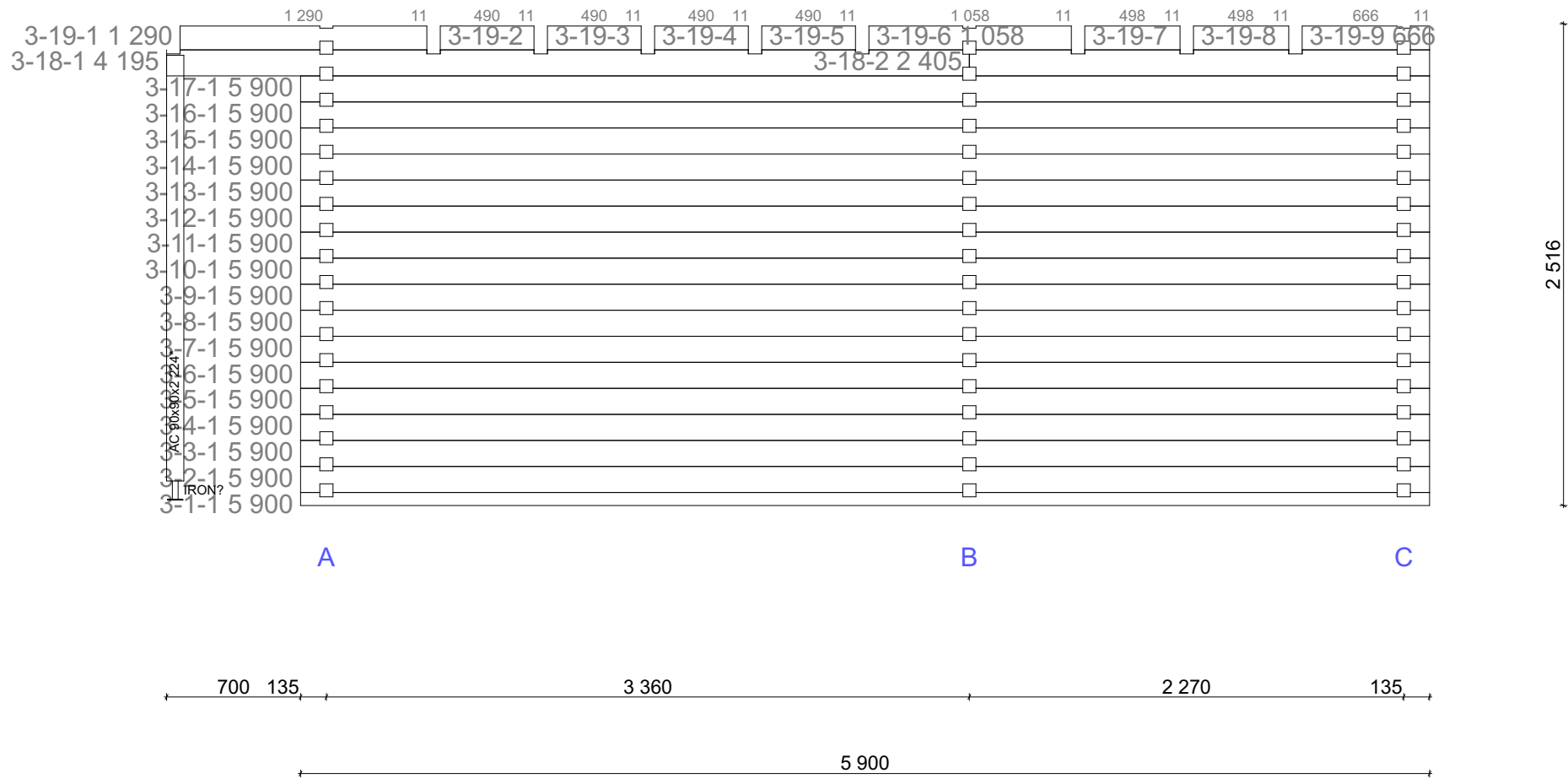
B

C

WALL 1

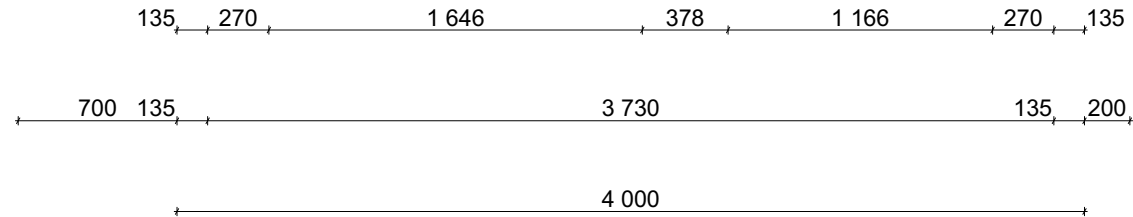
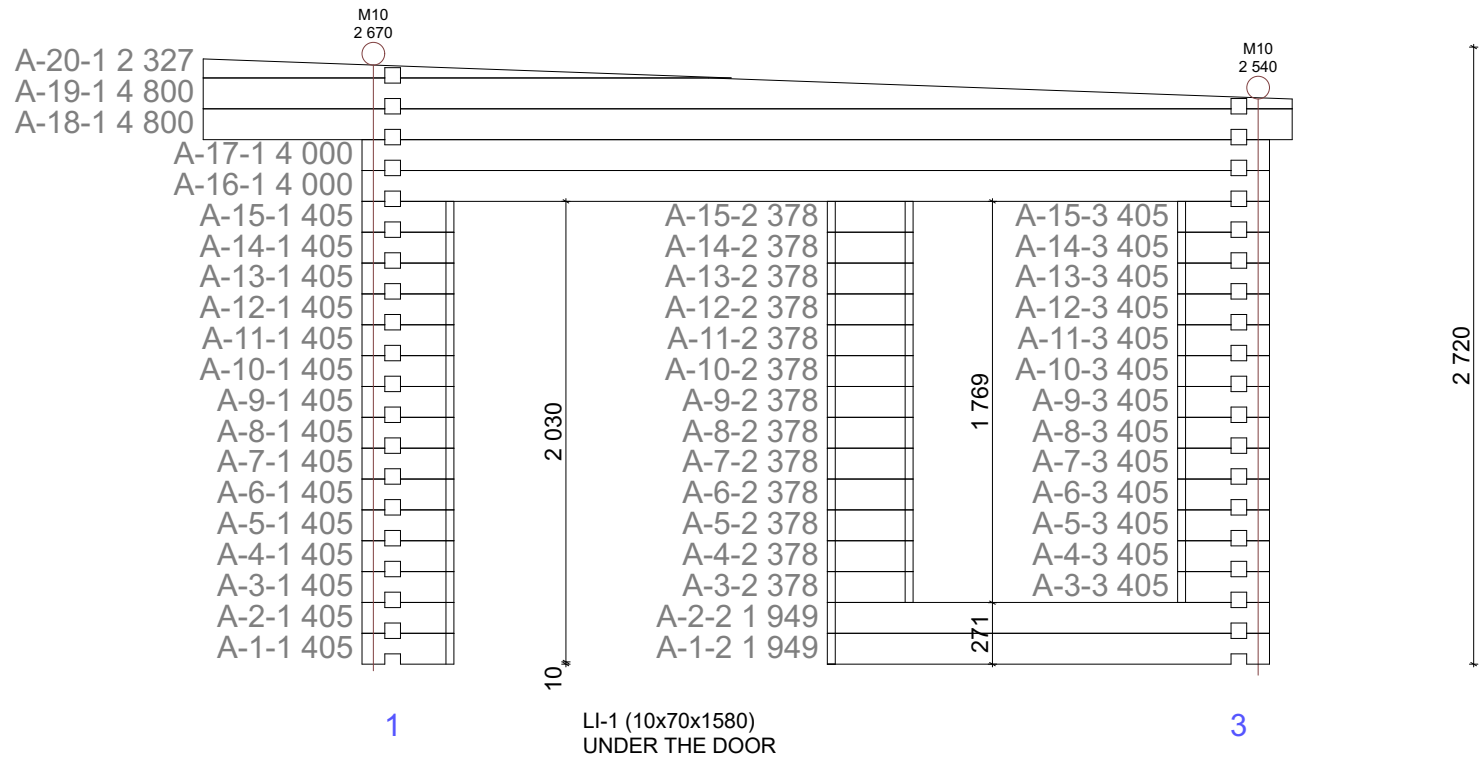


WALL 2

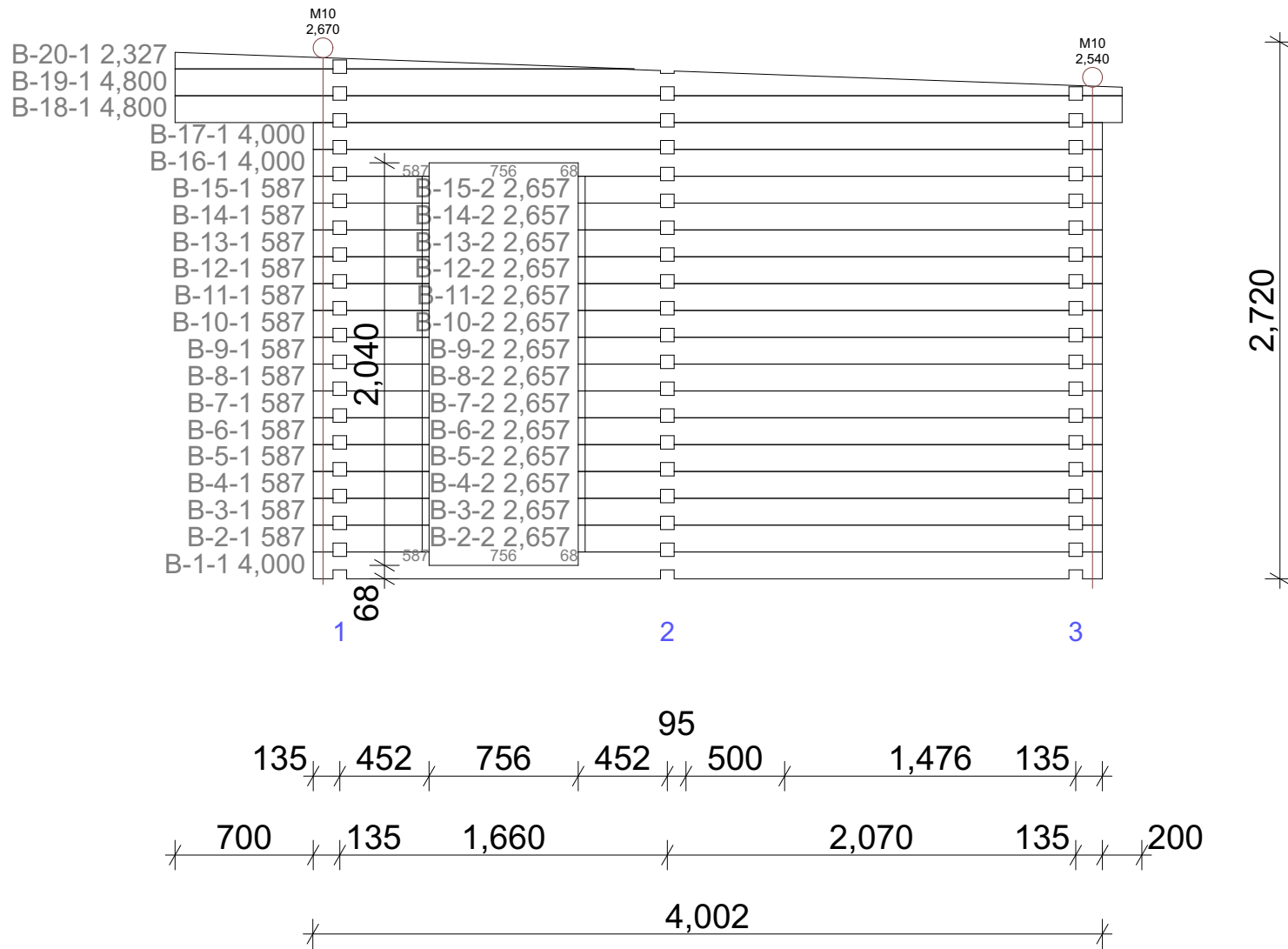


WALL 3

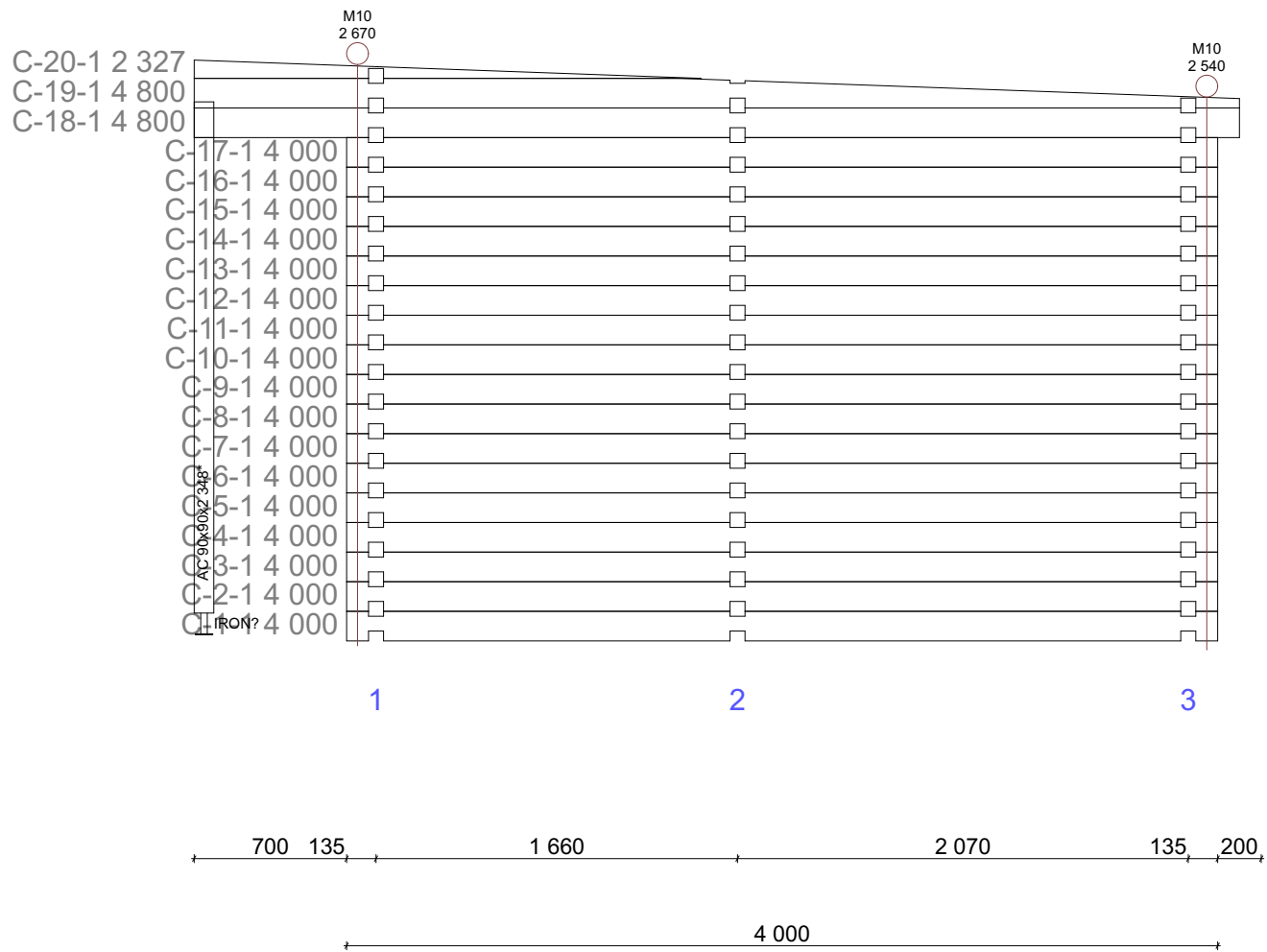




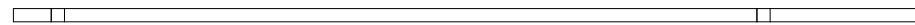
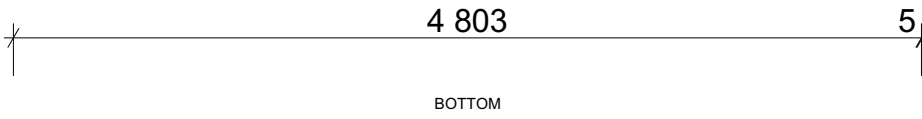
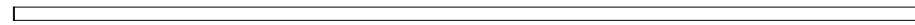
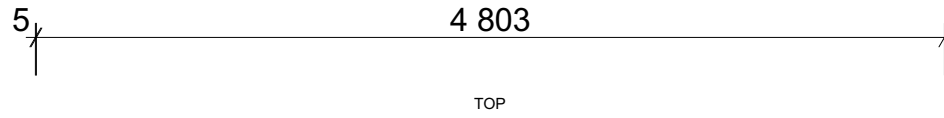
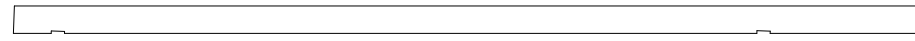
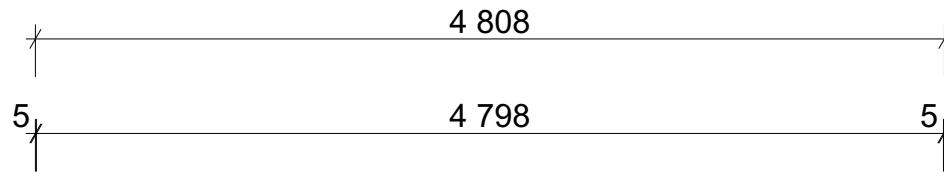
WALL A



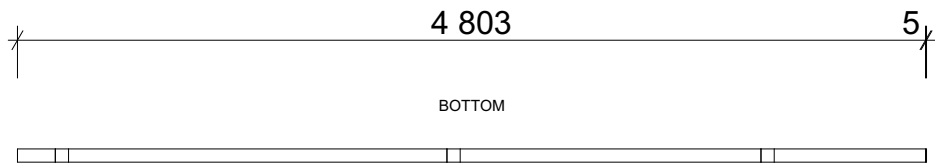
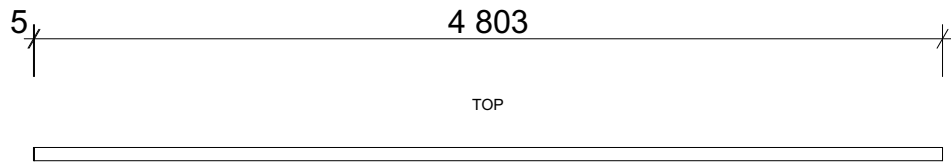
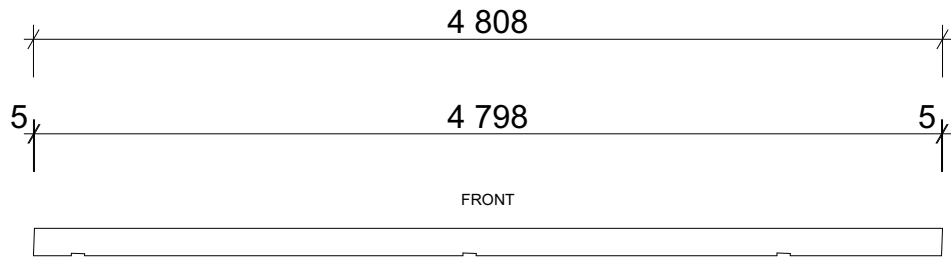
WALL B



WALL C



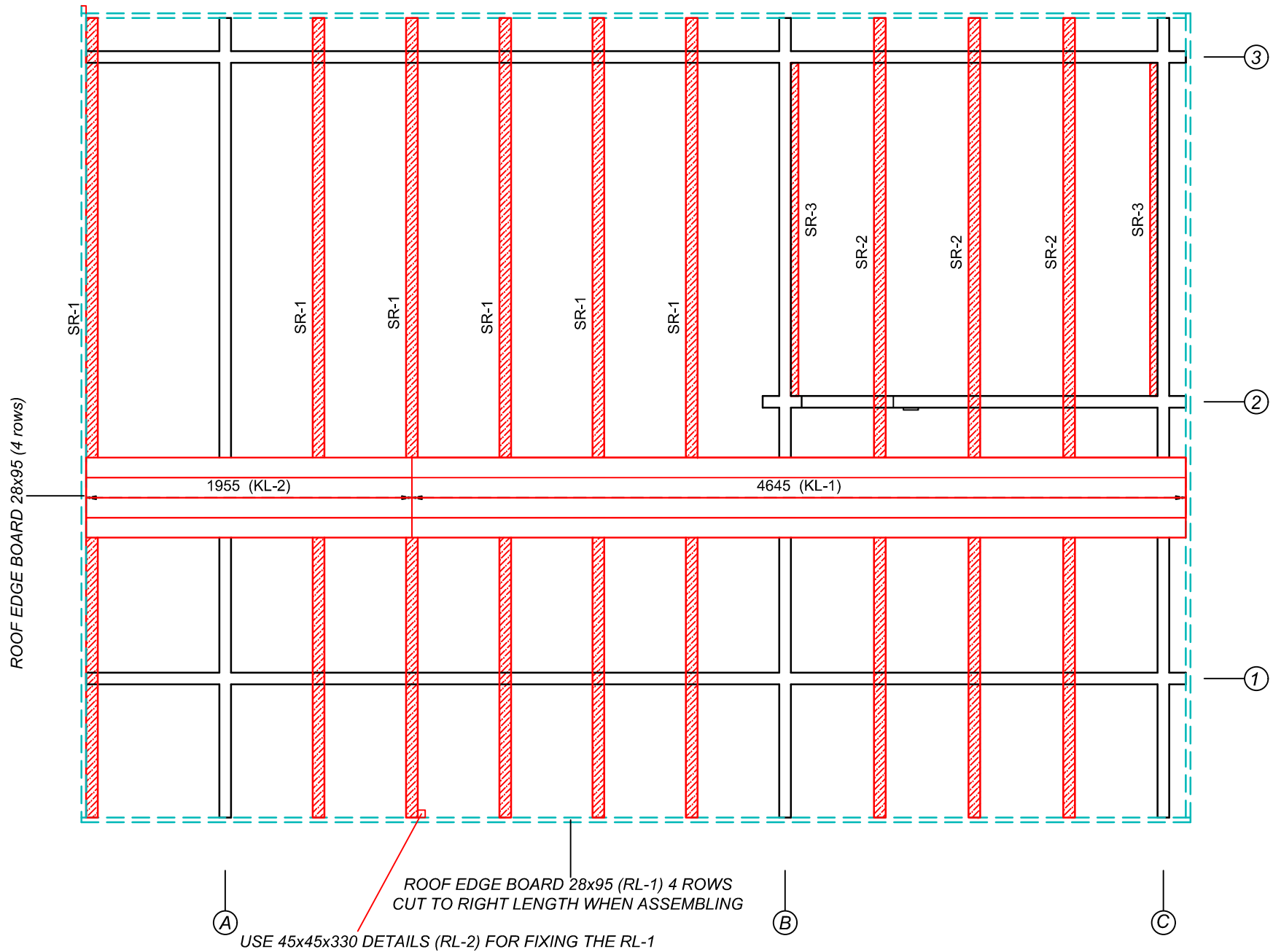
Roof rafter R-01



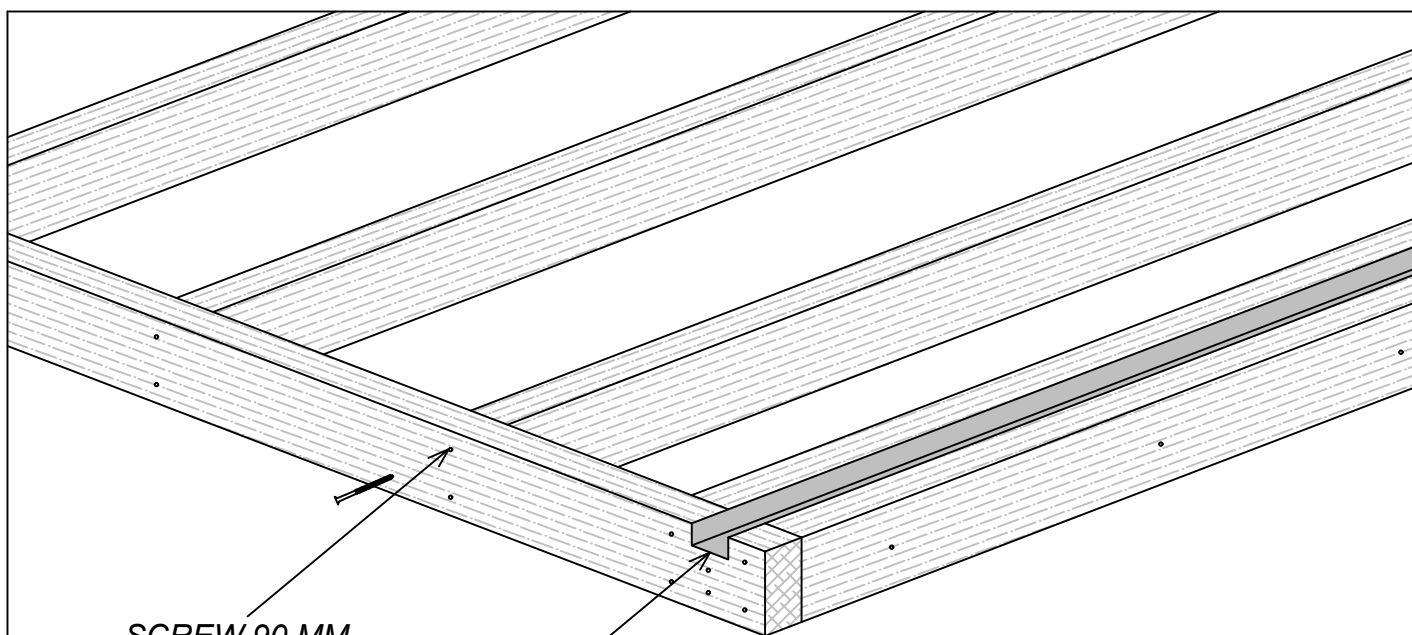
Roof rafter R-02

Fix the roof boards with 75 mm nail (2 nails per connection)

### ROOF RAFTERS / ROOF BOARDS



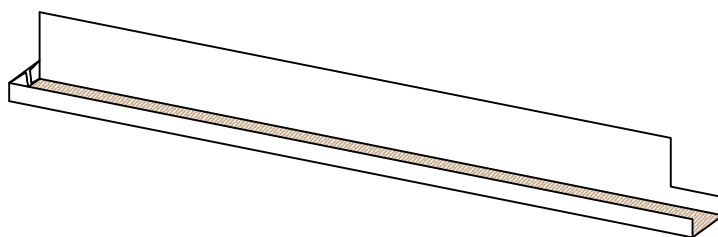
# FLOOR FRAME



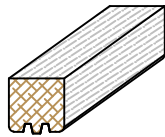
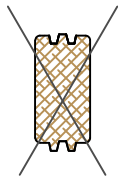
SCREW 90 MM

CUTOUT 45x25  
FOR WATER DRAINAGE

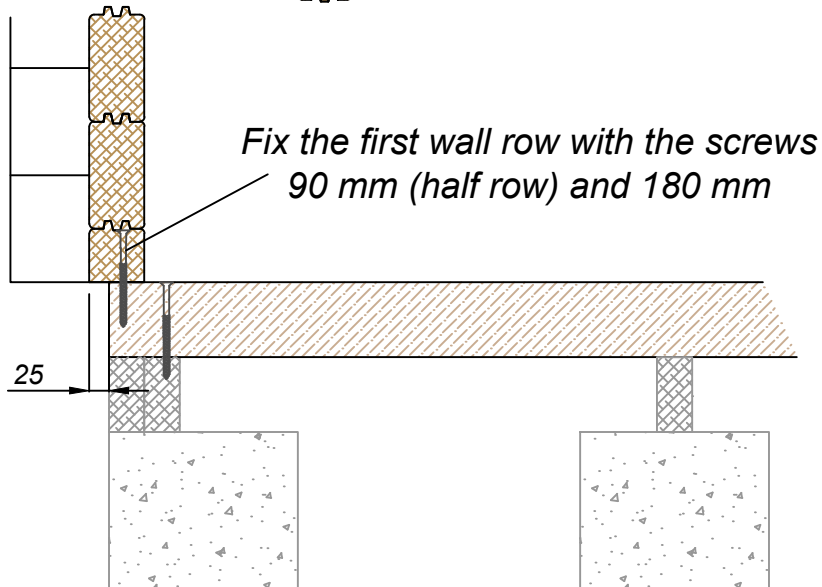
INSTALL THE WATER DRAINAGE DETAIL BEFORE FLOOR BOARDS  
FIX WITH FLOOR MOULDING



## FIRST ROW



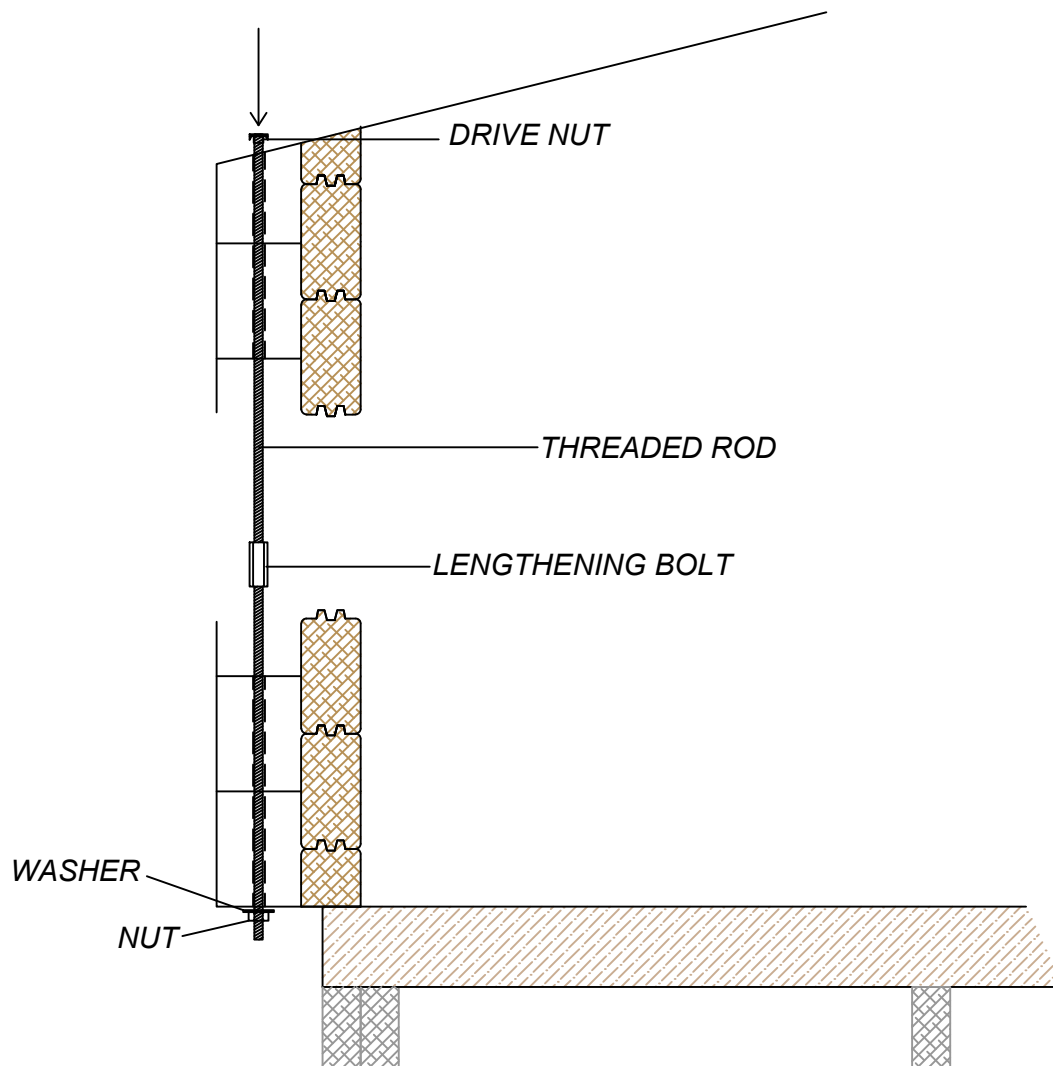
*Use rubber hammer and hammer block*



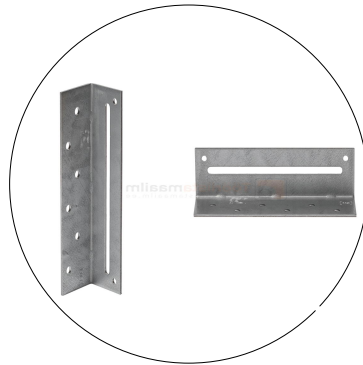


## THREADED RODS

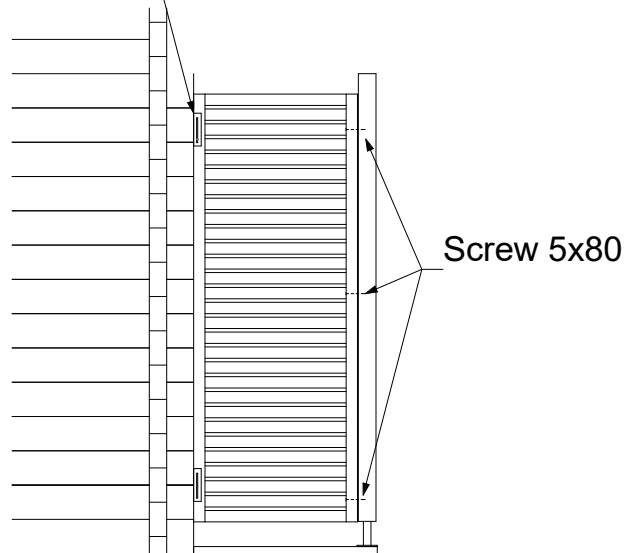
WHEN INSTALLING THE WALL LOGS,  
PLEASE CHECK THAT ALL THE HOLES ARE DRILLED!



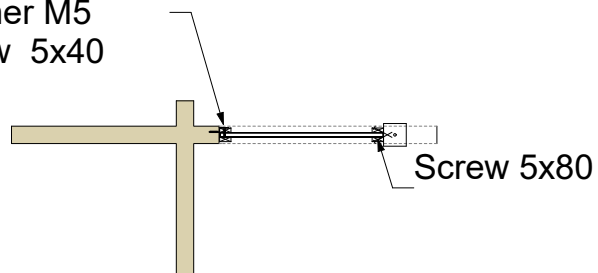
# GRID WALL



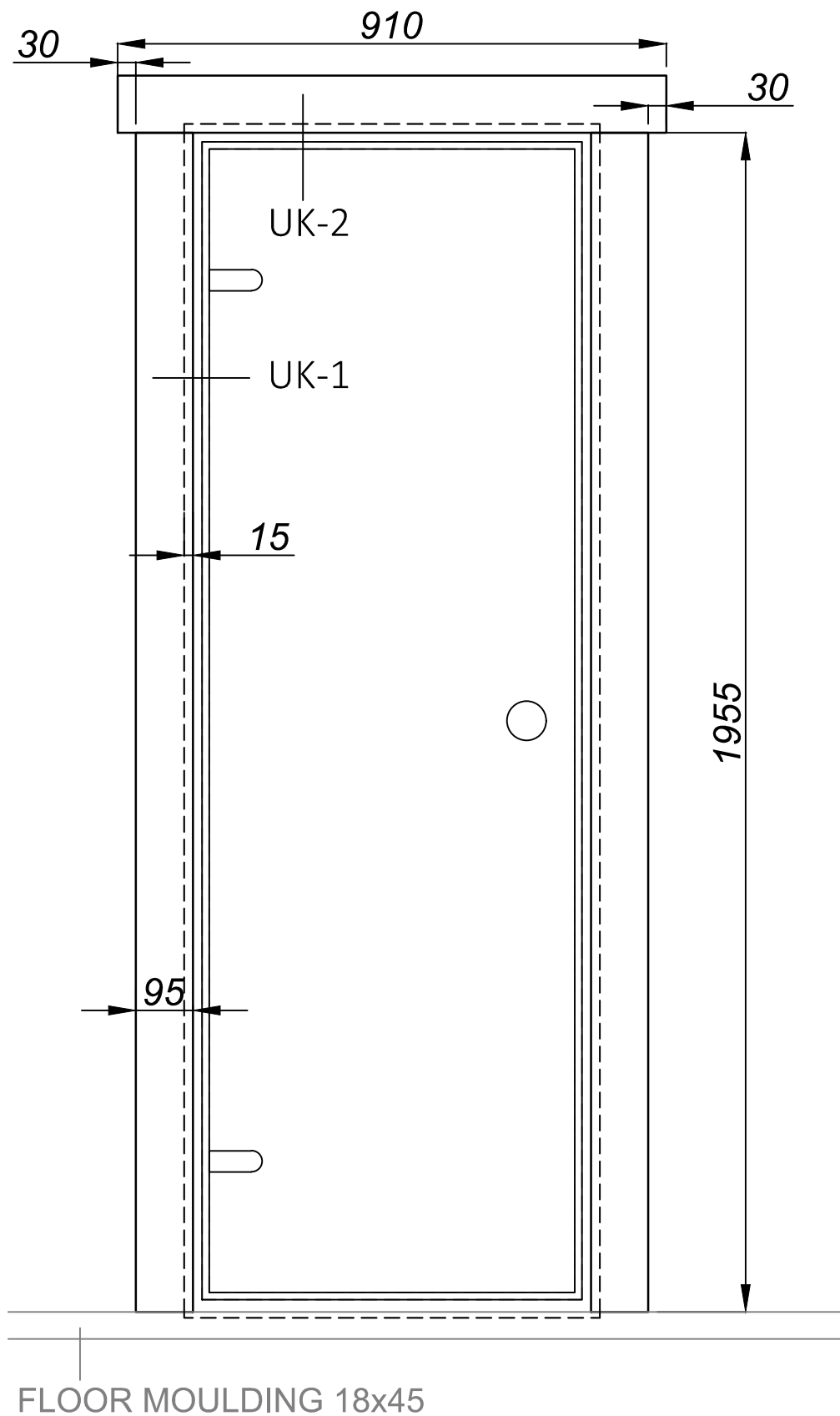
Adjustable  
bracket  
35x35\*130



Adjustable bracket  
Washer M5  
Screw 5x40

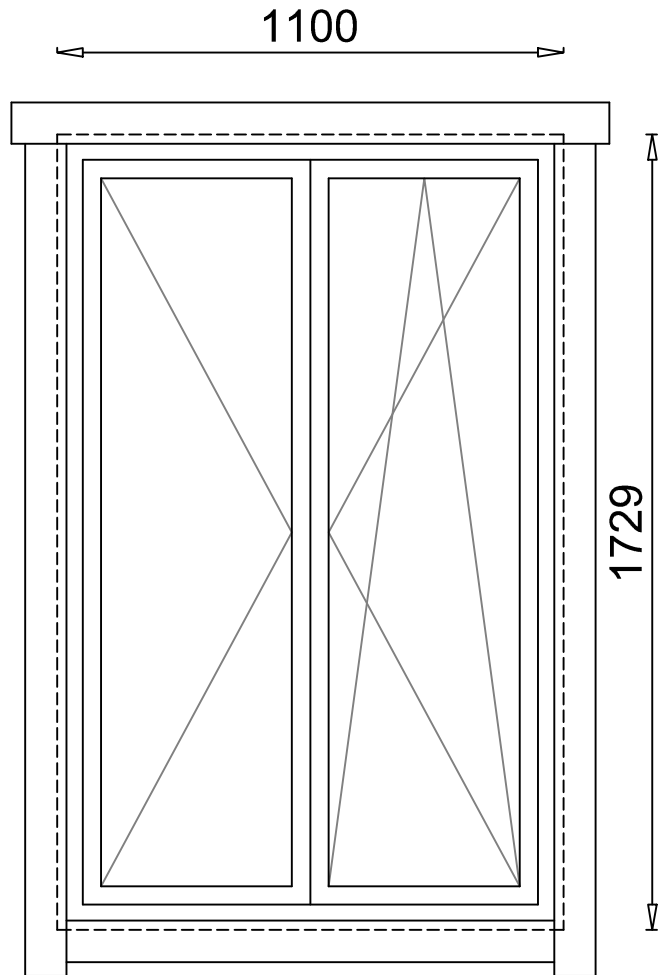


# GLASS DOOR 690x1980 - 2 pcs

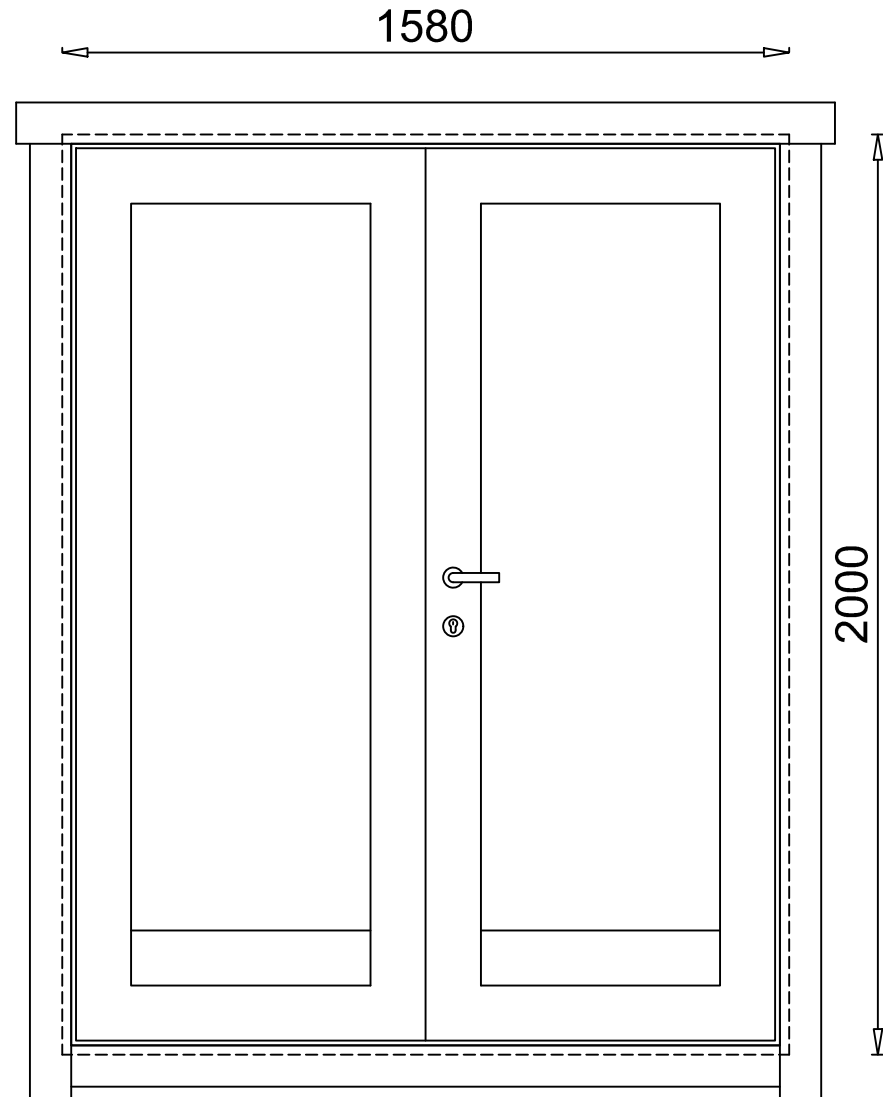


# WINDOWS AND DOORS

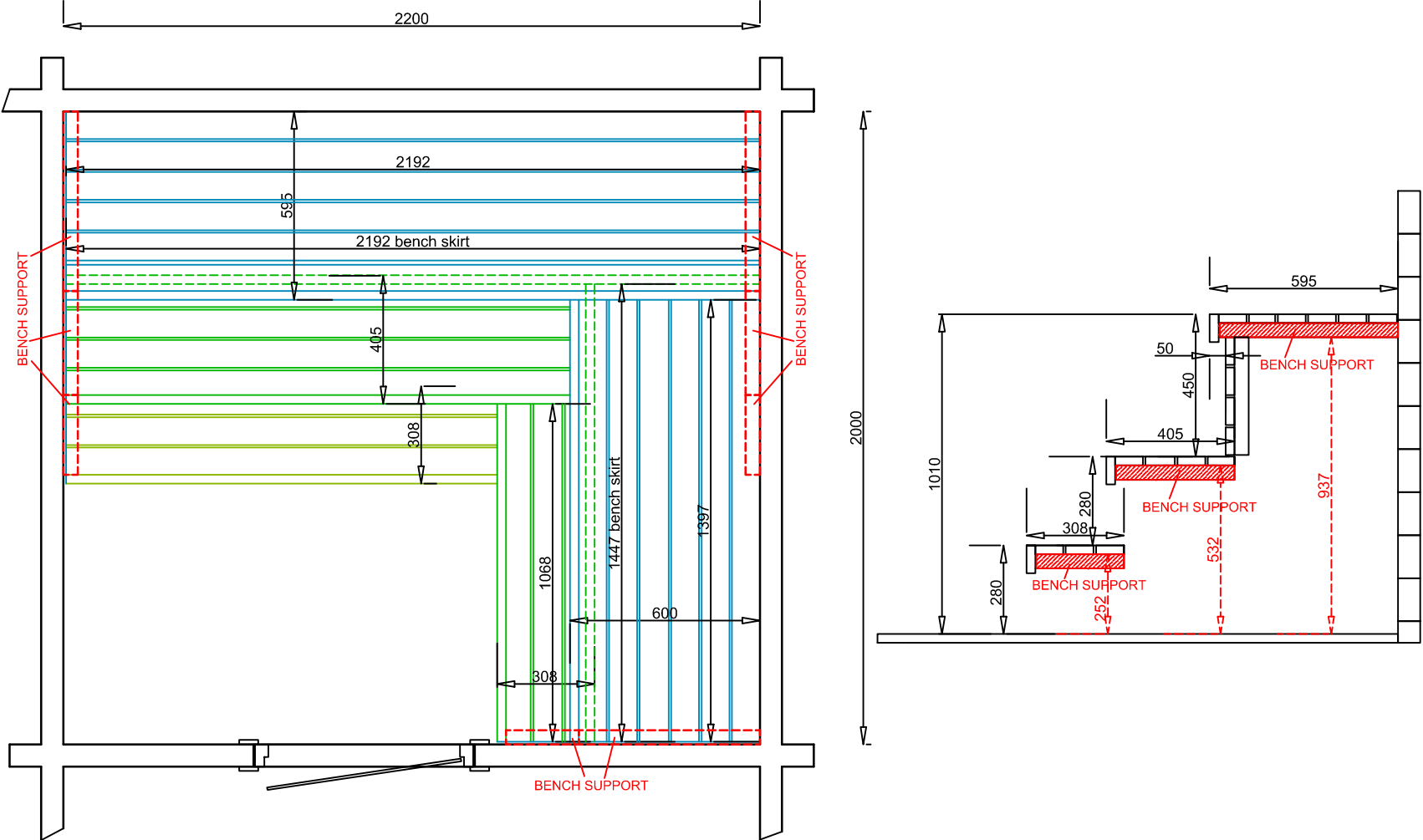
Window 1100x1729 - 3 pcs



Door 1580x2000 - 2 pcs



# BENCH SET



- FIX THE HORIZONTAL BENCH SUPPORTS TO THE WALL (CROSS-CUT 45x45, LENGTH SAME AS BENCH FRAME)
- USE 80 MM SCREWS
- LIFT THE BENCHES TO THE SUPPORTS
- FIX THE BENCHES WITH SCREWS THROUGH THE FRAME TO THE SUPPORTS
- USE VERTICAL SUPPORT IN THE MIDDLE, IF NECESSARY